

## The Coho Townhouses were a featured stop on the Solar Tour

# Join us for the 2008 Eugene Area Solar & Green Building Tour!

**Sunday October 5, 2008; 12:30pm-5pm \* Rain or Shine**



We'll begin with a brief presentation about incentives for energy efficiency and the status of solar technologies in our community. Participants will tour four buildings that feature energy efficient and passive solar design, solar electric, solar hot water, green building materials and other efficient and green technologies.

Tour sites are centrally located in downtown Eugene and *easily accessible by bicycle*. Each location will have a site representative to answer questions and discuss features. Join us for an afternoon

full of information and motivation about solar technologies and sustainable building.

More detailed information will be released soon including an after tour celebration location! Click "[About the Tour](#)" for event time and location information.

The Oregon Green and Solar Tours are sponsored by the Oregon Department of Energy, and coordinated by Solar Oregon in association with the [American Solar Energy Society's National Solar Tour](#).



## Tour starts at 1pm

- Welcome by John Simpson, President, Board of Commissioners, EWEB

- Guest speaker John Reynolds, chair of the board of the American Solar Energy Society

-Tour sites include The WaterShed (3rd & Mill mixed use site), Sustainable Centennial (Good Company and Advanced Energy Systems office building), Coho Townhouses, and a residential remodel.

- The tour ends with a reception at the Green Store (500 Olive St.), a new retail outlet featuring energy efficient and environmentally responsible products and offering energy design and installation services through its contract division.

Maps and Pertinent Tour Info will be handed out at registration. Please check back here for more info as it becomes available.

### **COST**

\$5 cash donation per map.

### **TRANSPORTATION**

Ride your bicycle! Tour site will be within biking distance and is highly suggested.

Carpooling is encouraged! There is free parking in the EWEB lot. LTD Bus Line #1 Campbell Center stop at 4th and High Street is the closest bus stop to EWEB Plaza (Regular Fares Apply).

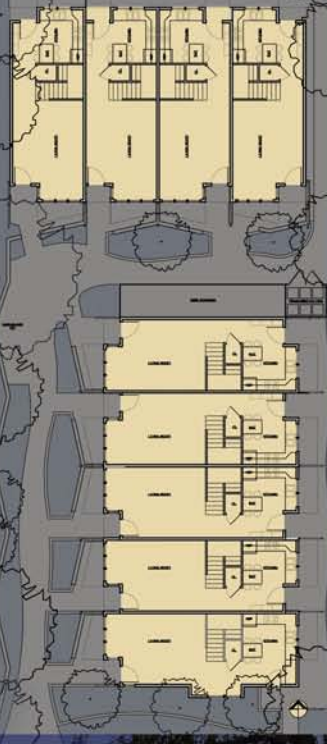
# Coho Townhouses



The Coho Townhouses project is a high density, infill project located in the West University District. This student-housing development consists of nine three-story townhouses divided into two buildings that are situated to create a common court. The key objective of this project was to create quality spaces that encourage a sustainable lifestyle.

The carbon footprint of this development is minimized through the integration of solar panels on the roof which deliver electricity to the units. All of the stormwater runoff is treated on site, thus reducing the load on the municipal systems. Limited car parking is available, however extensive covered lockable bicycle parking is provided to support pedestrian modes of transportation. Material choices were made to emphasize sustainability, low maintenance costs, and durability. Examples of this include the corrugated metal & cement fiber board sidings on the exterior, and the granite countertops found inside.

The townhouse units are arranged around a community courtyard designed to encourage social interaction among the tenants, however not at the expense of privacy within the units. The arrangement of windows in the angled bays along the facades provides each bedroom with ample daylight without overlapping views to/from other units. The Coho Townhouses are intended to provide students with higher-quality housing option that facilitates a lower-impact lifestyle.



## DESIGN TEAM

**ARCHITECTURE**  
2FORM Architecture  
Richard Shugar, Principal, A.I.A.  
Gabriel Greiner, Assoc. A.I.A.

**LANDSCAPE ARCHITECTURE**  
Schirmer & Associates  
Carol Schirmer, A.S.L.A.

**DESIGN CONSULTANT**  
Peter Keyes

**GENERAL CONTRACTOR**  
Essex General Construction

**CIVIL ENGINEERING**  
Weber Elliot Engineers

**STRUCTURAL ENGINEERING**  
BMGP Engineering PC

